



A.B.N. 96 224 230 957

Simon's Test & Tag Services

Workplace Safety Tips

December / January / February ISSUE NO: 3

Mobile: 0407 800 435 Email: simonstesttag@gmail.com Website: www.simonstesttag.com.au

Welcome to the third issue of Simon's Workplace Safety Tips.

This issue's topic is **"How safe is your work station?"**

Regards,

Simon.

Out of sight = out of mind. Does this sound familiar?

In today's workplaces, we are all guilty of quick fixes and over sights, I'll just do this for now – and get back to it later. Yet how many of us remember to go back and finish the task?

This applies to our work space too.

Have you looked under your desk lately?

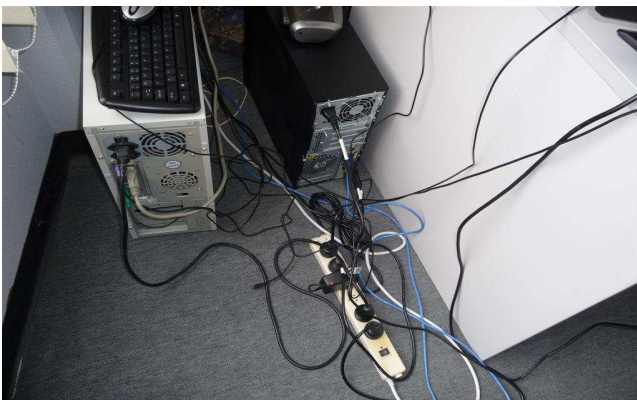
Does it look like this? A spaghetti of leads and cables covered in dust?



Four power boards plugged into a double power point



A second power board plugged into the first one – overload?



Two computers plugged into a power board – overload?



Dust and fluff from carpet sucked onto a computer vent



A.B.N. 96 224 230 957

Simon's Test & Tag Services Workplace Safety Tips

December / January / February ISSUE NO: 3

Mobile: 0407 800 435 Email: simonstesttag@gmail.com Website: www.simonstesttag.com.au

By test and tagging, the following office appliances **FAILED** a safety inspection.



Computer power lead with cuts



Shredder, toaster, power leads and power boards

How safe are your staff, equipment and data?

After an electrical safety inspection - tags are placed on each appliance to identify the date tested and when the next inspection is due



Arrow's show the tags installed after successful testing

Electrical appliances can:

- Be squashed up against a wall or under a filing cabinet
- Be covered in dust
- Become hot
- Be pushed to their safety limit without anybody realising until they STOP.

By test & tagging, you are identifying any electrical hazards and removing them from service immediately.

Reduce the risk for personal injury or loss of equipment and data.....

Call Simon's Test & Tag Services now for a personalised and efficient service.

Is your workplace electrically safe? Don't let the answer shock you! Page 2